



**RĪGAS DIZAINA UN MĀKSLAS VIDUSSKOLA**

RIGA SCHOOL OF DESIGN AND ART

# **METODISKIE MATERIĀLI**

## **MĀCĪBU PRIEKŠMETOS "ZĪMĒŠANA" UN "GLEZNOŠANA"**

**Maira Daņilāne**

139. Kr. Valdemara street,  
Riga, LV – 1013, Latvia  
Phone / Fax: +371 67360823  
[rdmv@rdmv.lv](mailto:rdmv@rdmv.lv)  
[www.rdmv.lv](http://www.rdmv.lv)

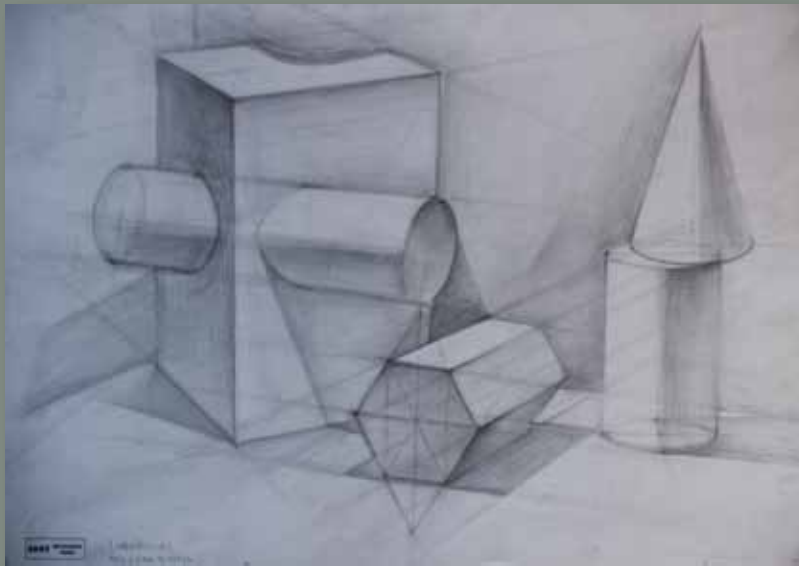
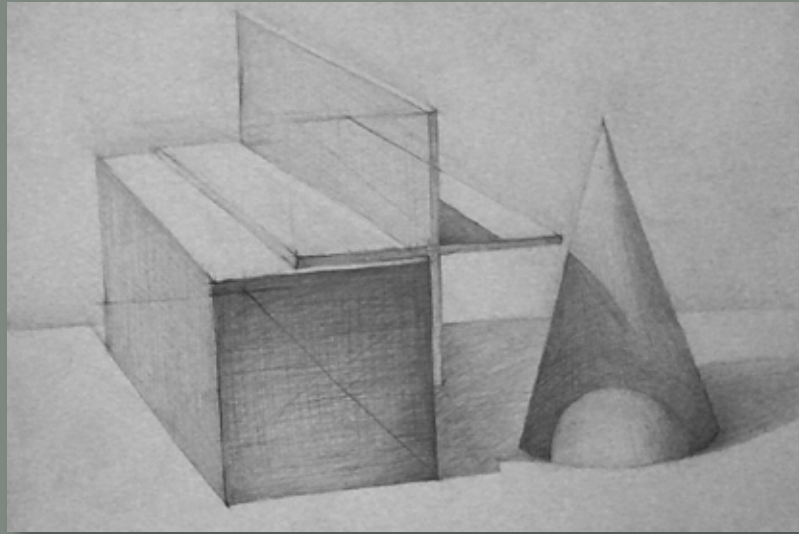
# PROFESSIONAL STUDY SUBJECTS

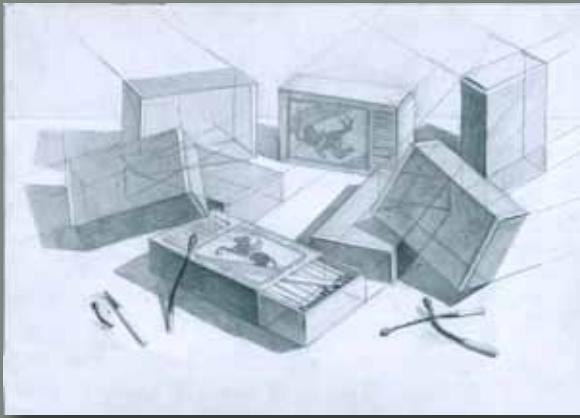
All departments have specific professional studies teaching program.

- Classic drawing and painting, based on studies of nature and the works of classics, make up basis artistic education in general.
- DRAWING - proportions, materiality, the importance of shading, from geometric shapes to portraits, also sketching for developing the swift hand and perfecting the line.
- ▶ PAINTING - the bases of developing a sense of colour. Work is done in various techniques - acrylic, aquarelle and oil, for developing various sides of the student's talents.

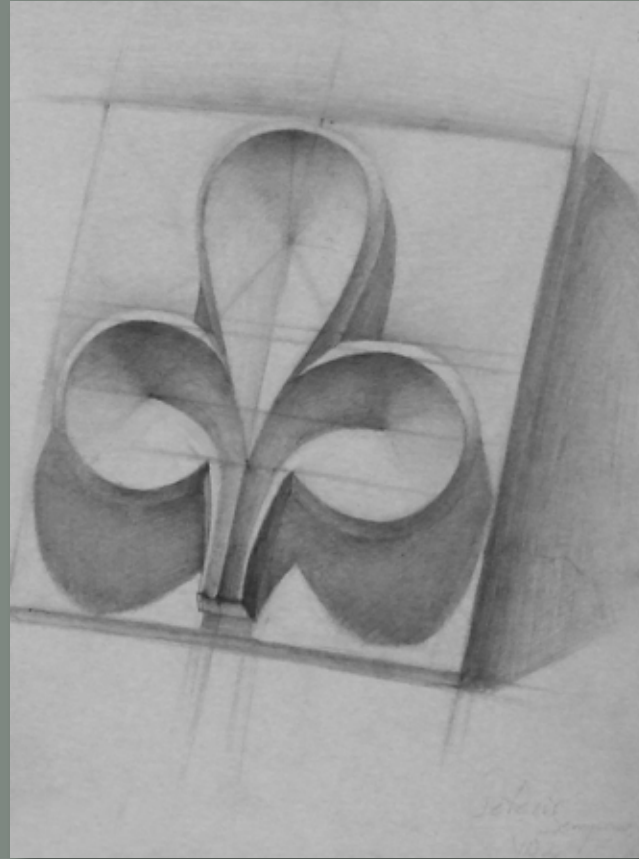


DRAWING  
R·D·M·V

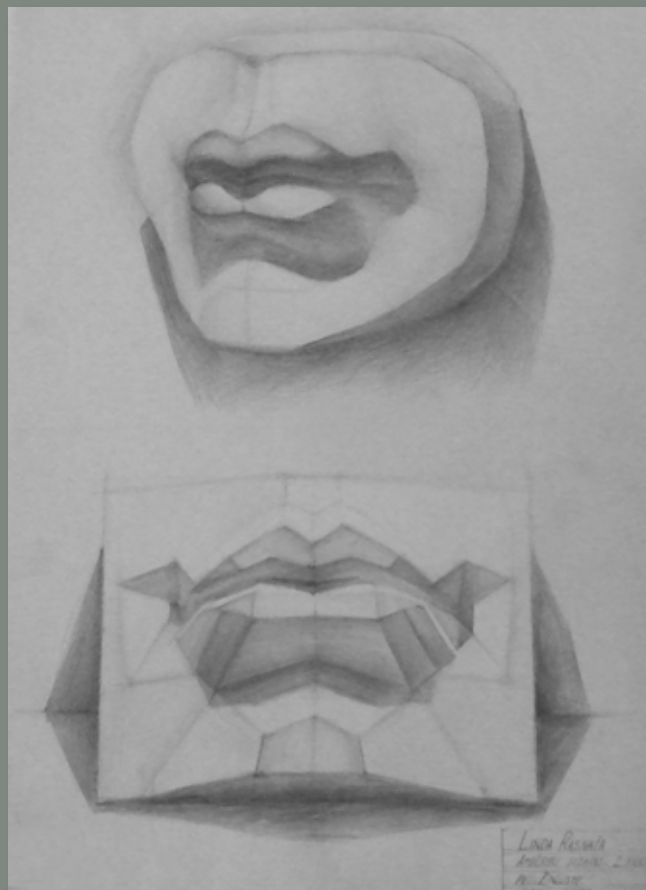
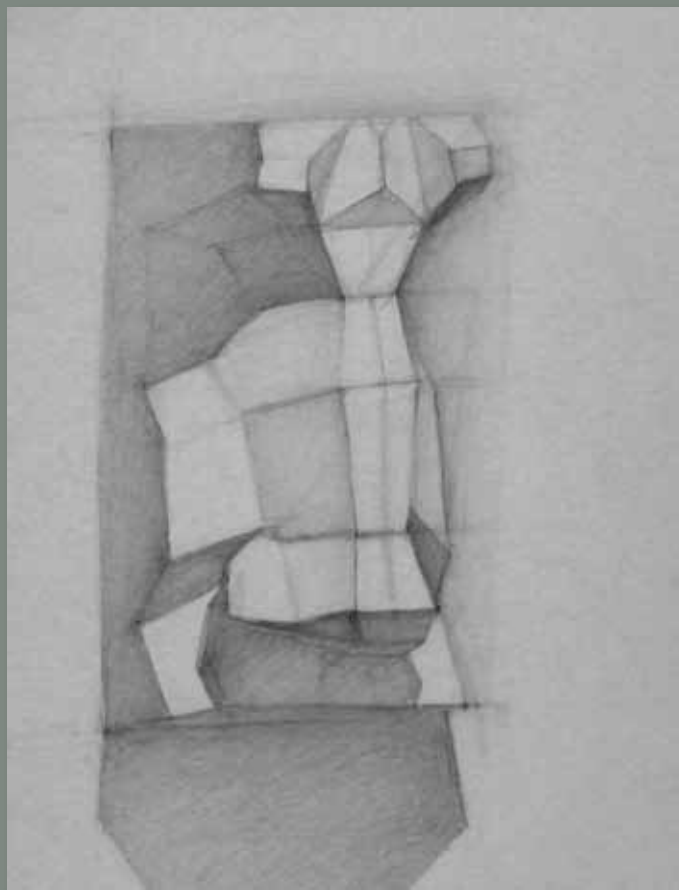










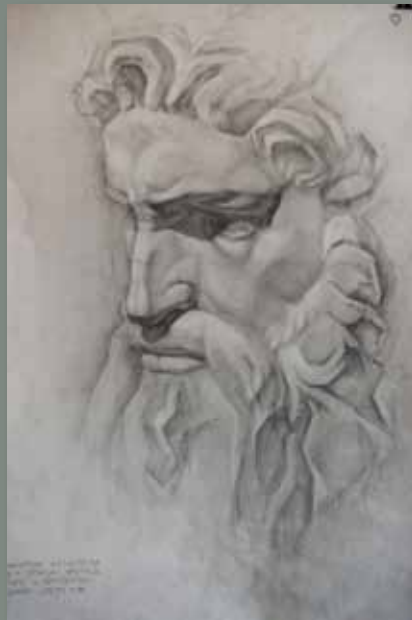








DRAWING  
R·D·M·V





DRAWING  
R·D·M·V



DRAWING  
R·D·M·V





PAINTING  
R·D·M·V



PAINTING  
R·D·M·V





PAINTING  
R·D·M·V



PAINTING  
R·D·M·V



PAINTING  
R·D·M·V



PAINTING  
R·D·M·V







PAINTING  
R·D·M·V



PAINTING  
R·D·M·V





PAINTING  
R·D·M·V



PAINTING  
R·D·M·V



PAINTING  
R·D·M·V



PAINTING  
R·D·M·V



PAINTING  
R·D·M·V





PAINTING  
R·D·M·V



PAINTING  
R·D·M·V





PAINTING  
R·D·M·V



PAINTING  
R·D·M·V



PAINTING  
R·D·M·V





PLEIN AIR  
R·D·M·V



Inga Čiurke VD. I  
08.06.10.



PLEIN AIR  
R·D·M·V

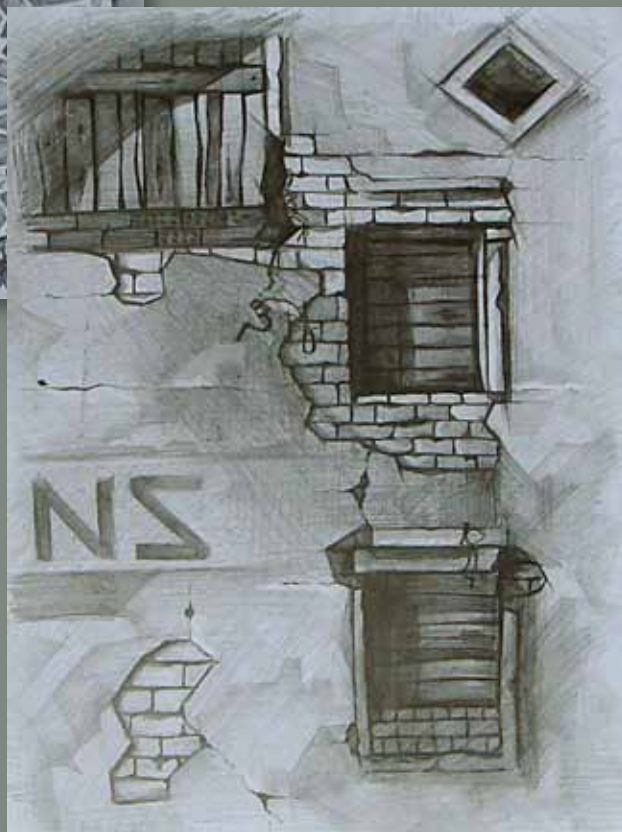




PLEIN AIR  
R·D·M·V



PLEIN AIR  
R·D·M·V



PLEIN AIR  
R·D·M·V





PLEIN AIR  
R·D·M·V



PLEIN AIR  
R·D·M·V





PLEIN AIR  
R·D·M·V



PLEIN AIR  
R·D·M·V



**RĪGAS DIZAINA UN MĀKSLAS VIDUSSKOLA**

**RIGA SCHOOL OF DESIGN AND ART**

139. Kr. Valdemara street,  
Riga, LV – 1013, Latvia  
Phone / Fax: +371 67360823  
[rdmv@ml.lv](mailto:rdmv@ml.lv)  
[www.rdmv.lv](http://www.rdmv.lv)